

Putting environmental equity on the map

September 22 | 2022

Jeff Brook, Dany Doiron and Eleanor Setton,
HealthyDesign.City co-Directors



Credit: Getty Images/Stockphoto

Presentation objective and overview

Presentation objective:

Provide an overview of the HealthyDesign.City project and the HealthyPlan.City tool

Presentation overview:

- Environmental health equity and the built environment
- HealthyDesign.City project
- HealthyPlan.City tool: current release
- HealthyPlan.City and HealthyPlace.City tools: fall release
- Future developments

Environmental equity and the Built Environment

“

The way communities are planned and built, and the services and resources provided within them, directly influence people's physical, mental, and social health.

A commitment to health equity means planning communities to support the health of all community members including low income families, children, older adults, newcomers, Indigenous groups, and people living with physical or mental health challenges.

”

British Columbia Centre for Disease Control (2016).
Health equity and the built environment: Scoping review



Through an
equity lens



BC Centre for Disease Control

Original Research Article


ENVIRONMENTAL
EPIDEMIOLOGY

OPEN

Analysis of community deaths during the catastrophic 2021 heat dome

Early evidence to inform the public health response during subsequent events in greater Vancouver, Canada

Sarah B. Henderson*, Kathleen E. McLean, Michael J. Lee, Tom Kosatsky



2021 Heat Dome: Significantly higher risk of heat-related death in lower socio-economic status and low greenness Vancouver area neighbourhoods

Réduire les vulnérabilités et les inégalités sociales : tous ensemble pour la santé et le bien-être

INSPQ INSTITUT NATIONAL DE SANTÉ PUBLIQUE DU QUÉBEC

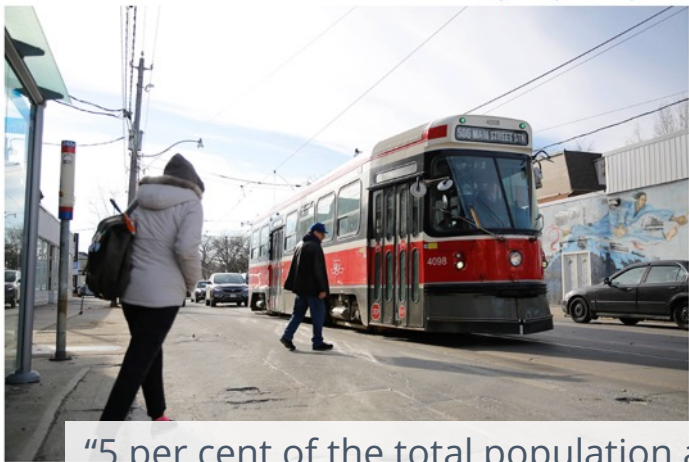


There are heat islands in 73% of Montreal's neighbourhoods with the lowest socio-economic status, compared with only 20% in Montréal neighbourhoods with the highest socio-economic status.

Uof T News January 09, 2019

FOLLOW U OF T NEWS

Stranded without transit? U of T researchers say one million urban Canadians suffer from 'transport poverty'



"5 per cent of the total population are living in low income households which are also situated in areas with low transit accessibility[...] This totals nearly one million people who are at risk of transport poverty nation-wide"

Environmental equity legislation in North America



HOUSE OF COMMONS
CHAMBRE DES COMMUNES
CANADA

BILL C-226 - National Strategy Respecting Environmental Racism and Environmental Justice Act

“ The Minister must develop a national strategy to promote efforts across Canada to advance environmental justice and to assess, prevent and address environmental racism.

First reading: February 2, 2022



S.2630 - Environmental Justice Act of 2021

“ This bill requires agencies to address and mitigate the disproportionate impact of environmental and human health hazards on communities of color, indigenous communities, and low-income communities resulting from agencies' programs and policies.

Introduced in Senate: May 8, 2021

New Canadian-specific evidence in urban environmental health



CANUE

Environment-health association studies

Urban greenness and mortality in Canada's largest cities: a national cohort study

Dan L. Crouse, Lauren Pinault, Adele Balram, Perry Hystad, Paul A. Peters, Hong Chen, Aaron van Donkelaar, Randall V. Martin, Richard Ménéard

THE LANCET
Planetary Health



Ambient air pollution and incidence of early-onset paediatric type 1 diabetes: A retrospective population-based cohort study

Michael Elten^{a,b}, Jessy Donelle^c, Isaac Lima^a, Richard T. Burnett^d, Scott Weichenath^{b,c}, David M. Erickson^b, Perry Hystad^e, Aaron van Donkelaar^f, Hong Chen^{g,h}, Lauren A. Baulⁱ



Research Paper

Greenspace access does not correspond to nature exposure: Measures of urban natural space with implications for health research

Ingrid Jarvis^{a,b}, Sarah Gergel^a, Mieke Koehoorn^a, Matilda van den Bosch^{a,b}

^a Department of Forest and Conservation Sciences, The University of British Columbia, Canada
^b School of Population and Public Health, The University of British Columbia, Canada



Early life exposure to air pollution and incidence of childhood asthma, allergic rhinitis and eczema

Teresa To^{1,2,3}, Jingqin Zhu^{1,3}, Dave Sieb⁴, Natasha Gray⁵, Ivy Fong⁶, Lauren Pinault⁷, Michael Jerrett⁸, Alain Robichaud⁹, Richard Ménéard⁷, Aaron van Donkelaar^{8,9,10}, Randall V. Martin^{8,9,10}, Perry Hystad¹¹



From 2017 to 2022



> 300

Data requests



> 125

scientific publications



20

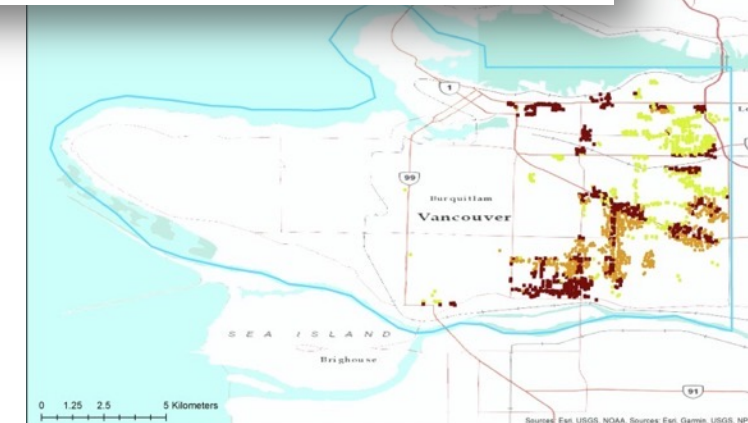
MSc and PhD theses

Environmental equity research



Healthy built environment: Spatial patterns and relationships of multiple exposures and deprivation in Toronto, Montreal and Vancouver

Dany Doiron^{a,b}, Eleanor M. Setton^b, Kerolyn Shairsingh^c, Michael Brauer^d, Perry Hystad^e, Nancy A. Ross^f, Jeffrey R. Brook^{c,g}



ORIGIN OF HealthyDesign.City: CANUE environmental equity research

Environment International 143 (2020) 106003



Contents lists available at ScienceDirect

Environment International

journal homepage: www.elsevier.com/locate/envint



Healthy built environment: Spatial patterns and relationships of multiple exposures and deprivation in Toronto, Montreal and Vancouver

Dany Doiron^{a,*}, Eleanor M. Setton^b, Kerolyn Shairsingh^c, Michael Brauer^d, Perry Hystad^e,
Nancy A. Ross^f, Jeffrey R. Brook^{c,g}



Toronto



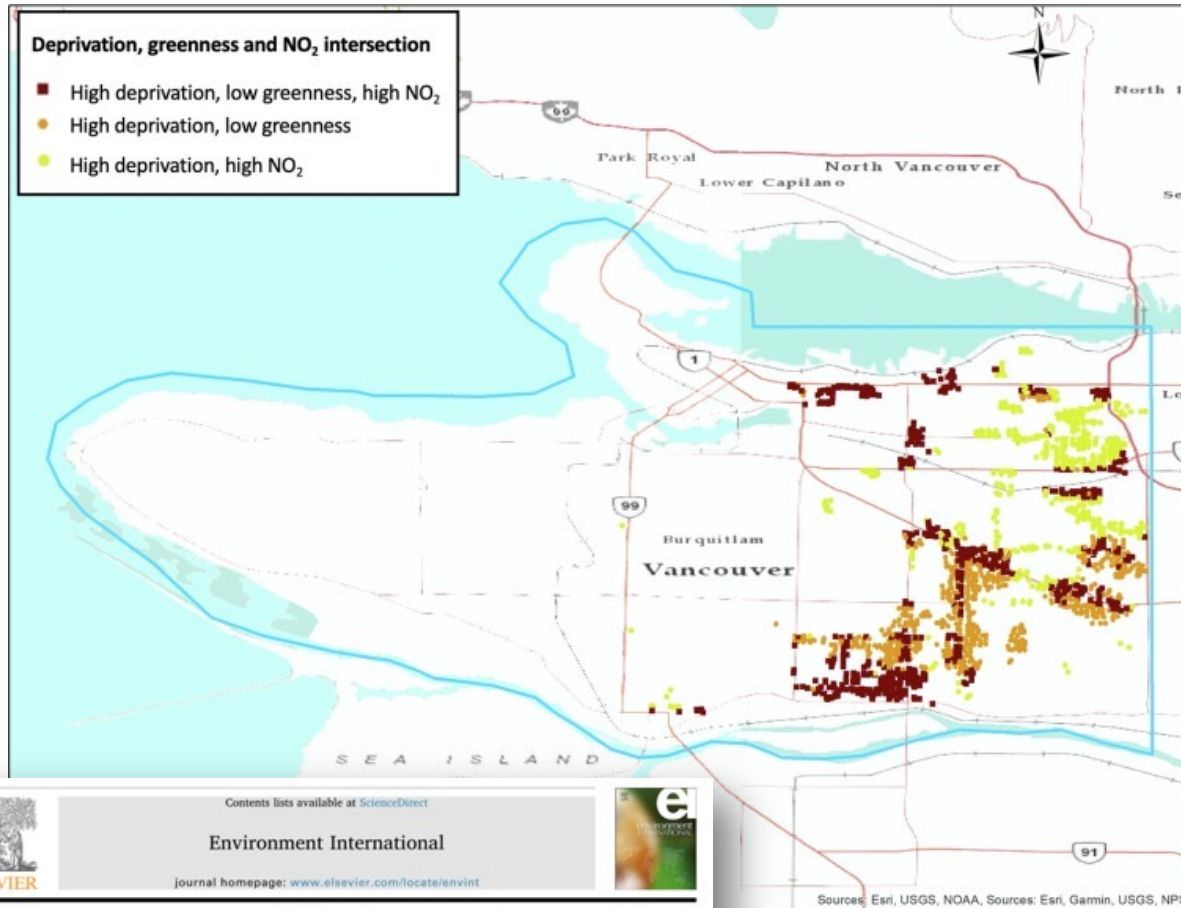
Montreal



Vancouver



ORIGIN OF HealthyDesign.City: CANUE environmental equity research

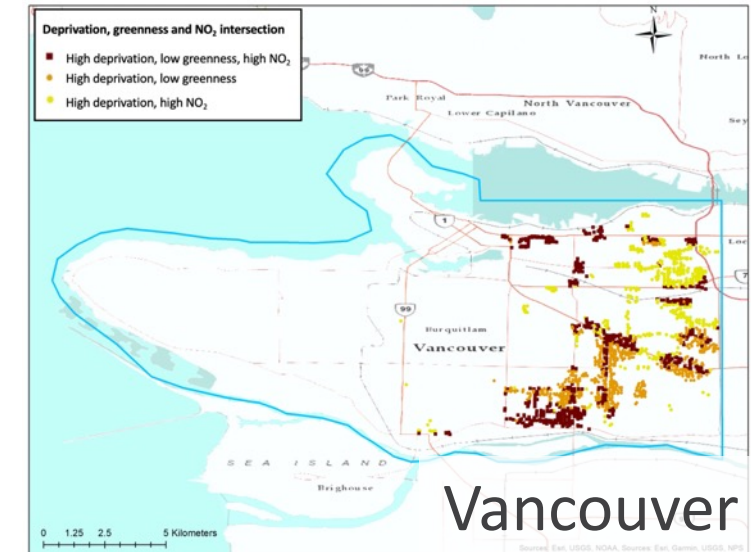
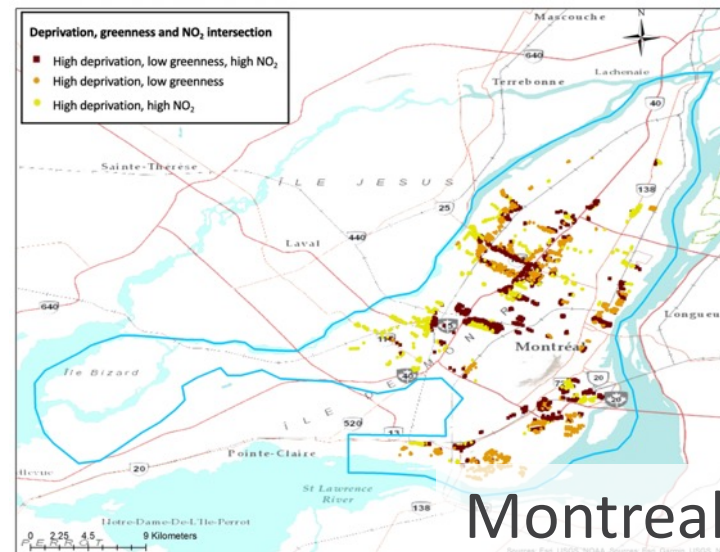
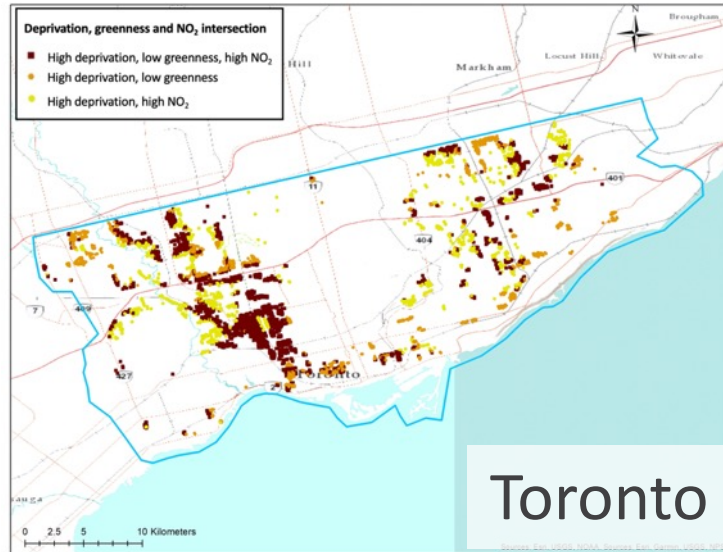


This map shows postal code locations characterized by:

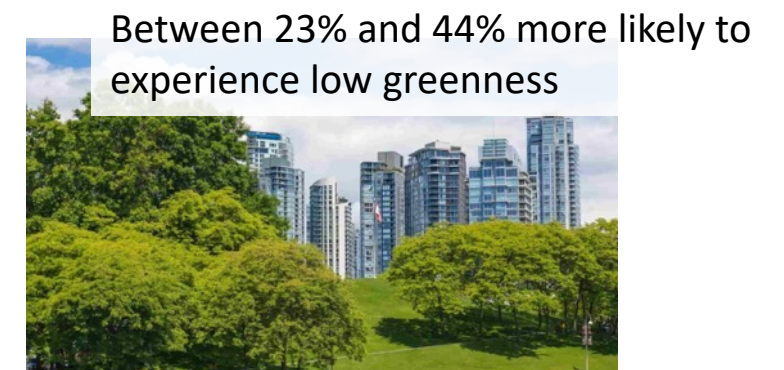
- High material deprivation AND high NO₂ (yellow)
- High material deprivation AND low greenness (orange)
- High material deprivation AND high NO₂ AND low greenness (red)



ORIGIN OF HealthyDesign.City: CANUE environmental equity research



In Canada's 3 largest cities, high deprivation areas:





Urban planners, public health professionals, advocacy groups and decision makers can leverage CANUE data to inform policies and programs.

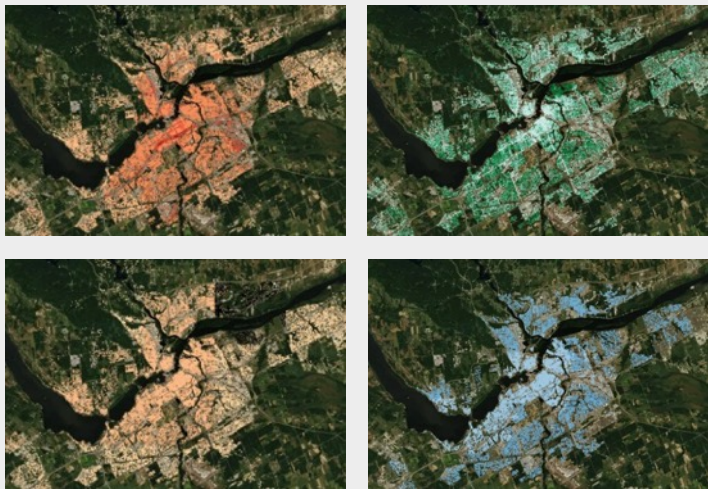


HealthyDesign.City: leveraging CANUE data for “actionable” tools



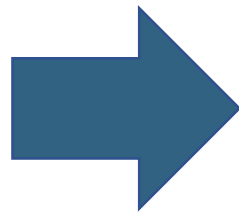
CANUE

Nationally-standardized
datasets



More info: www.canue.ca

Data holdings: www.canuedata.ca



Healthy Design .City

TOOLS THAT SUPPORT AN EQUITABLE
AND HEALTHY BUILT ENVIRONMENT

Supported by:

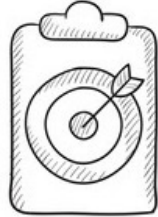


Public Health
Agency of Canada

Agence de la santé
publique du Canada

Enhanced Surveillance for Chronic
Disease Program (ESCDP)

HealthyDesign.City: Goals



Healthy
Design
.City

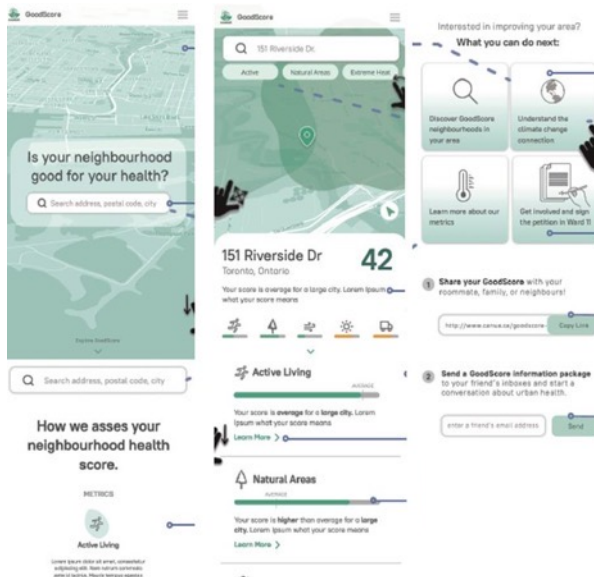
Map and visualise health relevant environmental factors to:

- **Monitor environmental** exposures over time and geography
- **Identifying locations where environmental inequity** exists
- **Support an equity focussed decision-making processes**
- **Enable policy and urban design intervention evaluation**
- **Empower communities** and **facilitate advocacy**
- **Increase public understanding** and awareness of built environment exposure and climate change vulnerabilities

HealthyDesign.City: Two tools

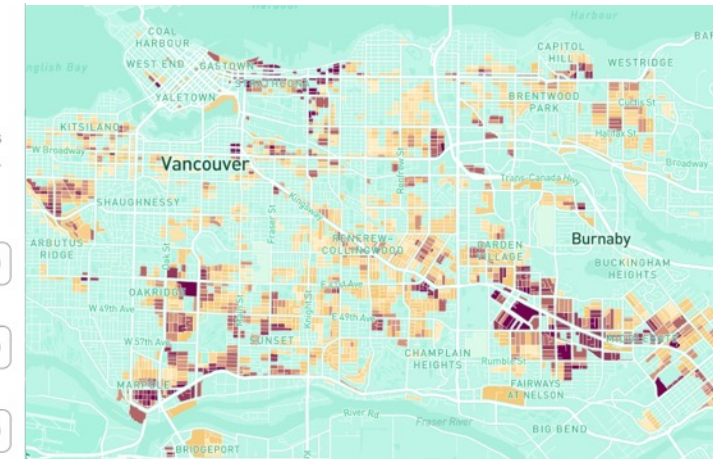
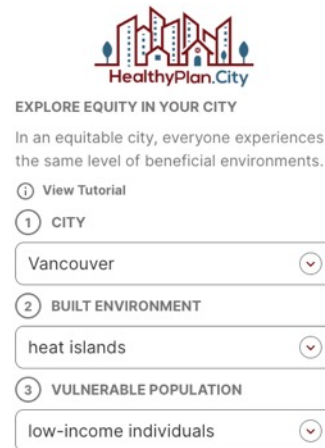
HealthyPlace.City

- **Aim:** Communication, public engagement, awareness
- **Audience:** Community organizations, members of the public, planners/public health professionals



HealthyPlan.City

- **Aim:** Analysis and reporting tool with a focus on equity
- **Audience:** Public health professionals, urban planners, community advocates, decision maker

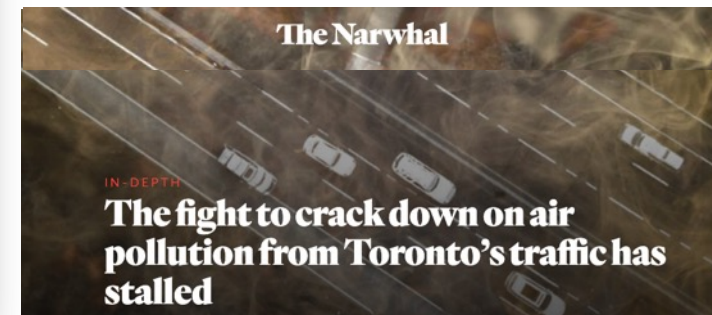
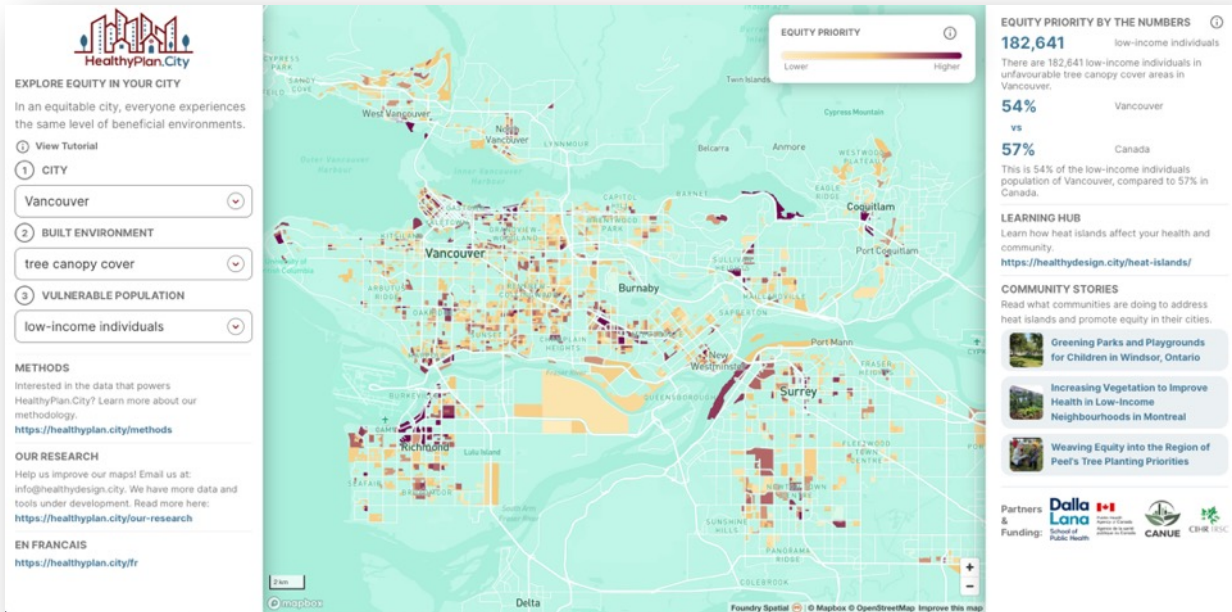


HealthyPlan.City: First Release on July 13th, 2022

- partnership with CBC/Radio-Canada

Focused on heat risk inequity:

- **Built environment factors:**
 - Land surface temperature
 - Tree canopy cover
- **Vulnerable populations:**
 - Children
 - Older adults
 - Low-income individuals
 - Visible minority individuals
 - Individuals living alone





EXPLORE EQUITY IN YOUR CITY

In an equitable city, everyone experiences the same level of beneficial environments.

View Tutorial

1 CITY

Vancouver

2 BUILT ENVIRONMENT

tree canopy cover

3 VULNERABLE POPULATION

visible minority individuals

METHODS

Interested in the data that powers HealthyPlan.City? Learn more about our methodology.

<https://healthyplan.city/methods>

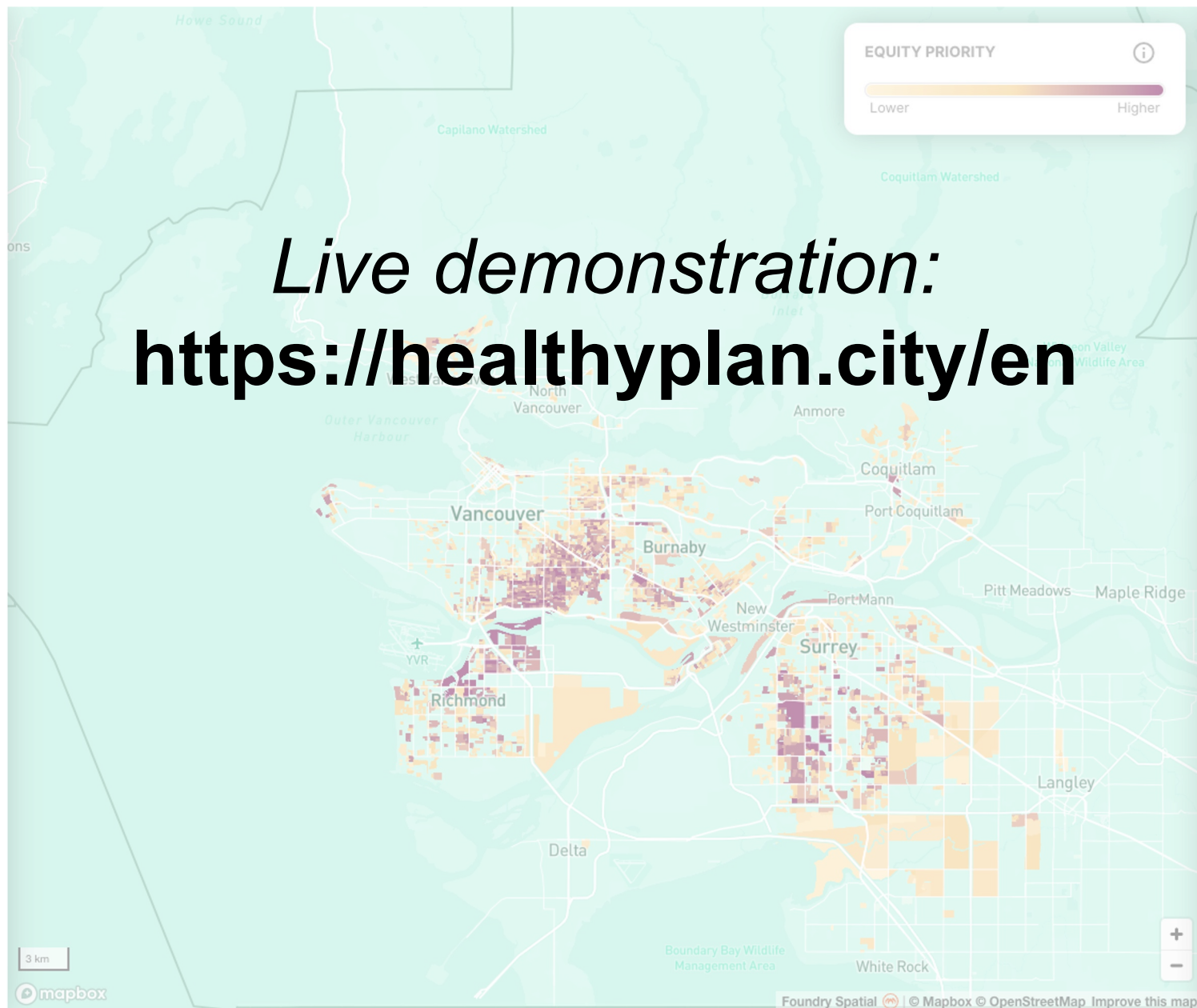
OUR RESEARCH

Help us improve our maps! Email us at: info@healthydesign.city. We have more data and tools under development. Read more here:

<https://healthyplan.city/our-research>

EN FRANCAIS

<https://healthyplan.city/fr>



Live demonstration:
<https://healthyplan.city/en>

EQUITY PRIORITY BY THE NUMBERS

646,883

visible minority
individuals

There are 646,883 visible minority individuals in unfavourable tree canopy cover areas in Vancouver.

55%

Vancouver

vs

62%

Canada

This is 55% of the visible minority individuals population of Vancouver, compared to 62% in Canada.

LEARNING HUB

Learn how heat islands affect your health and community.

<https://healthydesign.city/heat-islands/>

COMMUNITY STORIES

Read what communities are doing to address heat islands and promote equity in their cities.



Greening Parks and Playgrounds for Children in Windsor, Ontario



Increasing Vegetation to Improve Health in Low-Income Neighbourhoods in Montreal



Weaving Equity into the Region of Peel's Tree Planting Priorities

Partners
&
Funding:

Dalla Lana
School of
Public Health

Public Health
Agency of Canada
Agence de la santé
publique du Canada

CANUE

CIHR TRSC

Built environment data



Land Surface Temperature

- Average land surface temperature from May - September 2019
- Derived from LandSat 8 satellite data in Google Earth Engine



Tree Canopy Cover

- Percentage of tree canopy cover in 2015
- Derived from Landsat Vegetation Continuous Fields (VCF) tree cover layer in Google Earth Engine

Vulnerable populations data



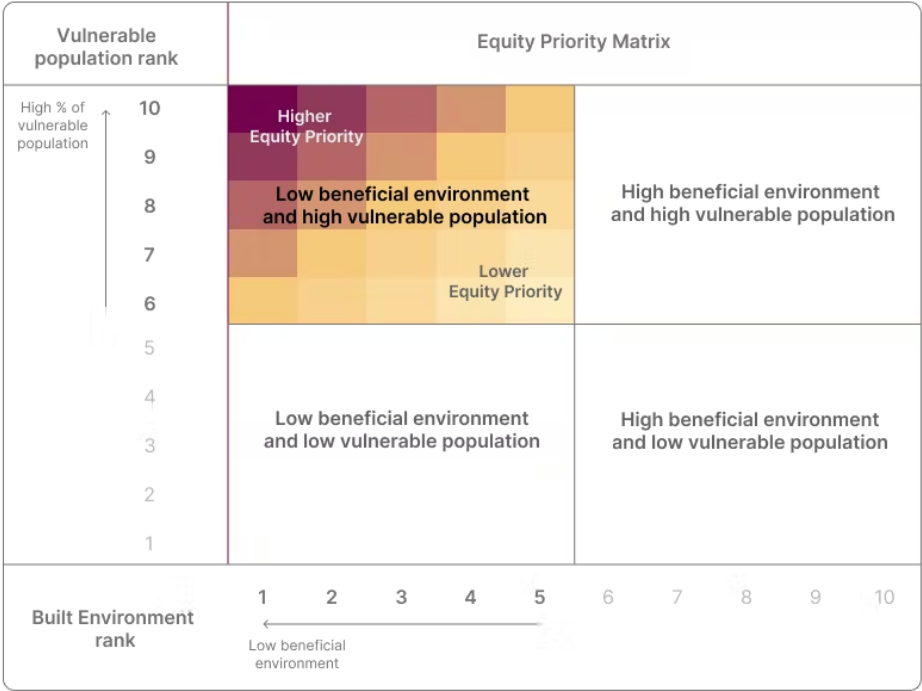
Dissemination area data downscaled to dissemination block

- **Children:** % pop. under 15 y/o
- **Older adults:** % pop. over 64 y/o
- **Low-income individuals:** % pop. under low-income threshold
- **Visible minority individuals:** % of pop. that identify as visible minority
- **Individuals living alone:** % pop who live alone

Equity calculation

“Equity priority” areas have higher than median proportion of vulnerable populations and lower than median levels of beneficial environments

- Each factor ranked as deciles (1 to 10) within a city
- Equity Priority are dissemination blocks with:
 - vulnerable population ranks > 5 AND
 - built environment ranks < 6



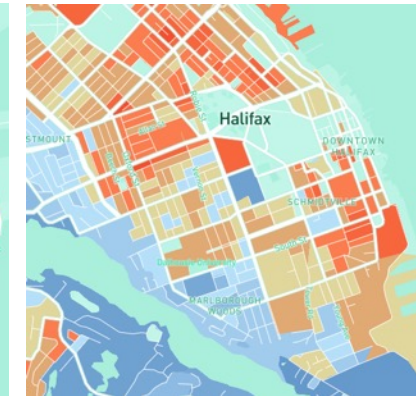
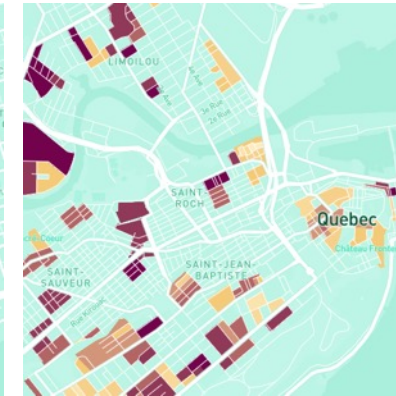
Strengths and limitations

Strengths

- Simple, nationally-consistent data
- Evolving tool
- Built to be adaptable to local contexts
- Freely available




Limitations

- Based upon surrogates that are not “ground-truthed”
- Potentially not as accurate as locally available data
- Equity analyses in smaller cities limited given small variation
- Vulnerable populations broadly defined (for now)



Example: Gage park in Hamilton



Built Environment factors	<div><h3>Urban climate</h3><ul style="list-style-type: none">• Land surface temperature• Tree canopy</div>	<div><h3>Parks and Recreation</h3><p>Infrastructure that promotes physical activity:</p><ul style="list-style-type: none">• Large greenspaces• Urban parks• Indoor recreation</div>
	<div><h3>Community Amenities</h3><p>Diversity of destinations/services:</p><ul style="list-style-type: none">• Transit stops• Education and culture• Retail and services• Healthy food outlets• Cycling infrastructure</div>	<div><h3>Air and noise pollution</h3><ul style="list-style-type: none">• Traffic-related pollution• Noise pollution</div>
Demographic factors	<div><h3>Vulnerable Populations</h3><ul style="list-style-type: none">• Under 15• Over 65• Low-Income• Visible minority• Living alone</div>	

Healthy Design .City



CLIMATE RISKS: Wildfire smoke



Vulnerability and Equity

Intersect demographic factors to better identify vulnerable populations

For example:
Low income seniors



CLIMATE RISKS: Flooding

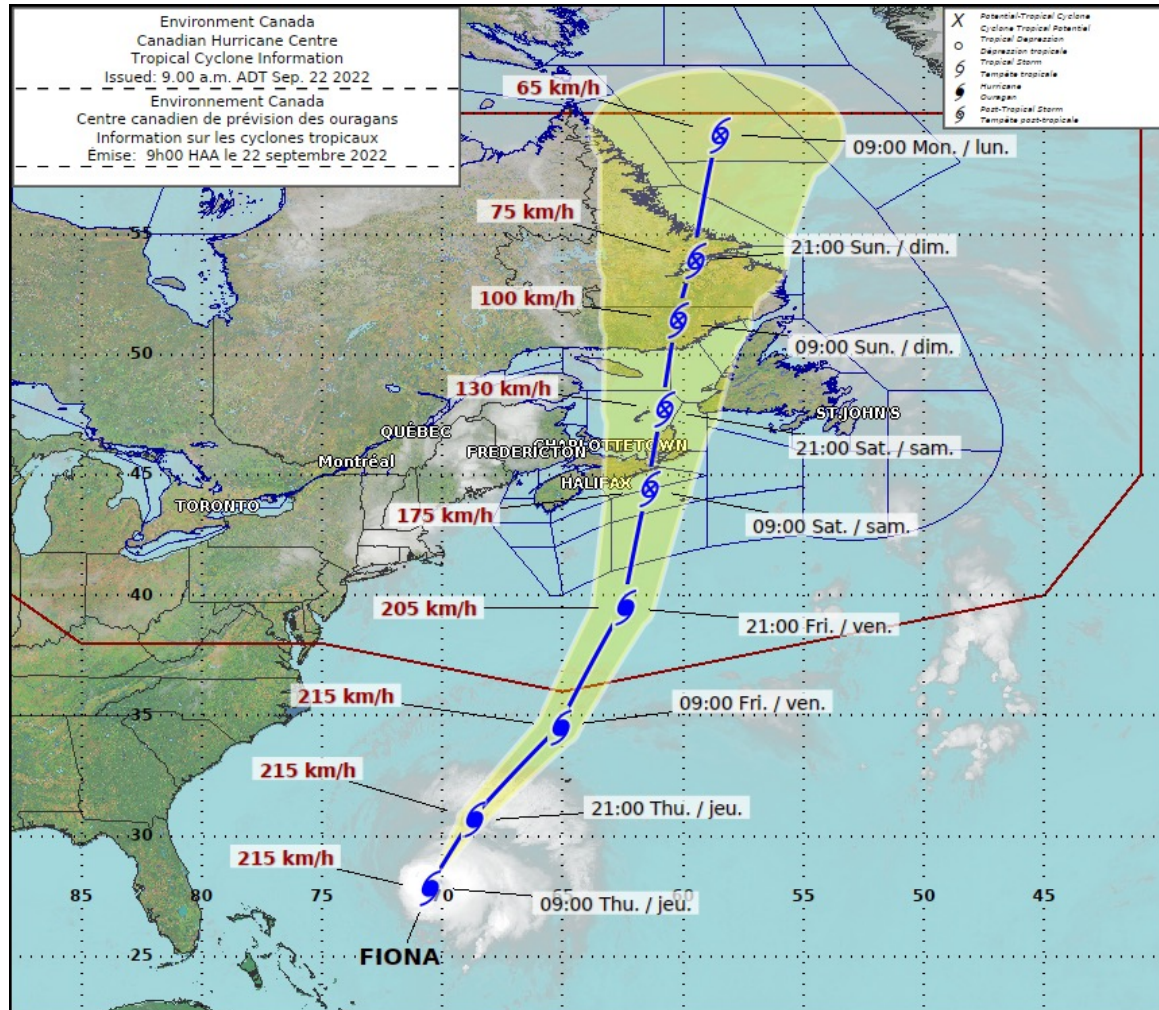
Rain pounds Montreal area, causing flooding and road closures



Nearly 60 mm of rain fell on downtown by 7 p.m., according to Environment and Climate Change Canada

Verity Stevenson · CBC News · Posted: Sep 13, 2022 7:48 PM ET | Last Updated: September 14





URBAN EDGE

How inequalities made Harvey recovery harder for many nonwhite Houstonians

FEATURES: May. 6, 2021

HURRICANE HARVEY | URBAN DISPARITY

ANDY OLIN



When Stephen Klineberg was conducting the Kinder Houston Area Survey in February 2017, he asked Houston-area residents to name the biggest problem facing the region. At the time, only 1% of participants thought flooding and storms were the

SUSTAINABLE DEVELOPMENT GOALS



Accelerating Canadian research that motivates progress on **sustainable cities**

SUSTAINABLE DEVELOPMENT GOALS



Healthy
Design
.City



Accelerates **solution-oriented work** by democratizing data and targeting environmental equity

Questions

HealthyDesign.City/CANUE team



Jeffrey Brook, University of Toronto
HealthyDesign.City Co-Director
CANUE Scientific Director



Andre Redivo, University of Victoria
Geospatial Data Specialist



Eleanor Setton, University of Victoria
HealthyDesign.City Co-Director



Allan Mckee, University of Toronto
Communications Specialist



Dany Doiron, McGill University Health Centre
HealthyDesign.City Co-Director
CANUE Managing Director



Natalia Calijorne, University of Toronto
Administrative assistant

Funding from:



More information:

HealthyDesign.City: www.healthydesign.city

HealthyPlan.City tool: <https://healthyplan.city>

CANUE : www.canue.ca

CANUE data portal: www.canuedata.ca

TEDx: <https://www.youtube.com/watch?v=sDOklHvbdmQ>